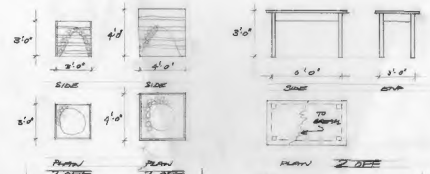


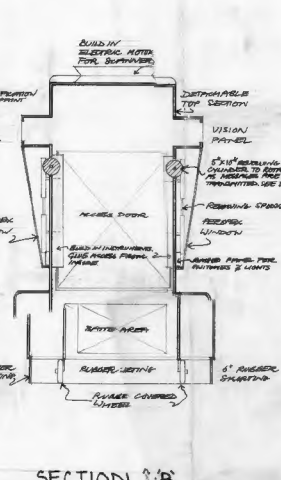
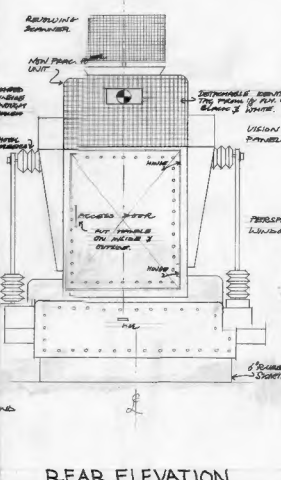
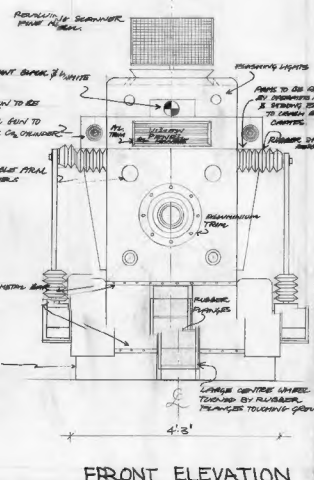
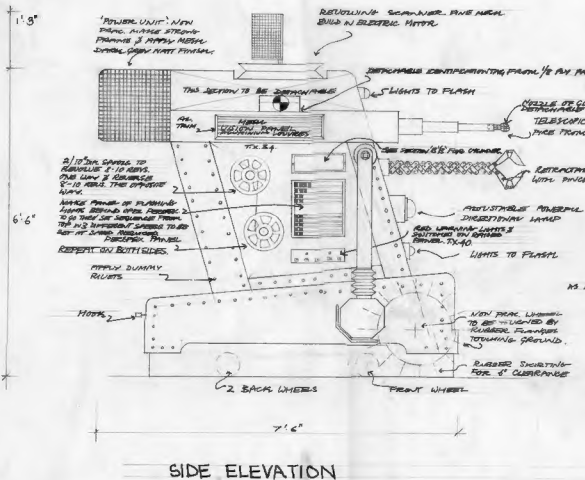
'DR.WHO' · FILMING: 3A 3B · REQUIRED FOR EALING 23-27/5/66



FRUIT CASES: MAKE IN BRASS TO BE SHOWN IN PROFILE

WORK REMARKS: MAKE IN BRASS TO BE SHOWN IN PROFILE

SCALE: 1/4"=1'0"



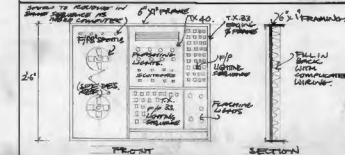
SHAWCRAFT LTD.

• MOBILE COMPUTER •
• 1 OFF • KEEP FOR SERIES •
REQUIRED FOR LOCATION FILMING IN 22/5/66 & 23-27/6/66 AT EPLING

TO BE CONSTRUCTED ON 3 RUBBER COATED WHEELS (4" CLEARANCE AND RADIUS COVERED BY RUBBER SHALTING) & TO MOVE IN ALL DIRECTIONS TO ARRIVE AT ANY POSITION TO PLACE ALL FLASHING LIGHTS, RELEVANT SCANNERS AT 'NEEDING TIMES' TO BE REACHED BY MEN STANDING INSIDE ENTIRELY BY ACCESS DOOR AT REAR. NOT DESIGNED TO BE DETACHABLE AS UNIT ON SUBSTANCE.

GENERAL FINISH: TO BE AS DUAL METAL FINISH SILVER GRAY. PAINT TO WITHSTAND WEATHER.

VISION PANEL · 2 OFF · 1 SCALE



THESE PANELS TO BE CONSTRUCTED IN LIGHT ALUMINIUM FOR SURVIVAL IN WETLAND. PRODUCE SHOWN TO GIVE FINAL RELEVANT VIEW IN PANEL.

DESIGN DEPARTMENT

SHEET NO. 11 DATE DRAWN 4.5.66 SCALE 1"=1'0"

ALLOCATION	DESIGNER	PRODUCER
APR. REL.	DESIGN CHARGER	SCHEM. FILE
BACK PRODUCTION	DRIVER	ART. SKETCHING
DRAWING	ELECTRICIAN	SCHEM. BOARD
EXHIBITION	FINISHING	ENGINE ARCHT.
EXHIBITION	GEN. MANAGER	GEN. ARCHT.
FINISHING	IRONING	GEN. ARCHT.
IRONING	MATERIALS	GEN. ARCHT.
MATERIALS	PAINTING	GEN. ARCHT.
PAINTING	REPAIRS	GEN. ARCHT.

DESIGNED BY RAYMOND LONDON
DESIGNER RAYMOND LONDON (T) 21-15
DRAWN BY JAMES CHANDLER
DATE 5.5.66
PRODUCTION 'DR WHO' SERIES BB
PRODUCTION NUMBER 2440

SPECIALIST CONTRACTOR

